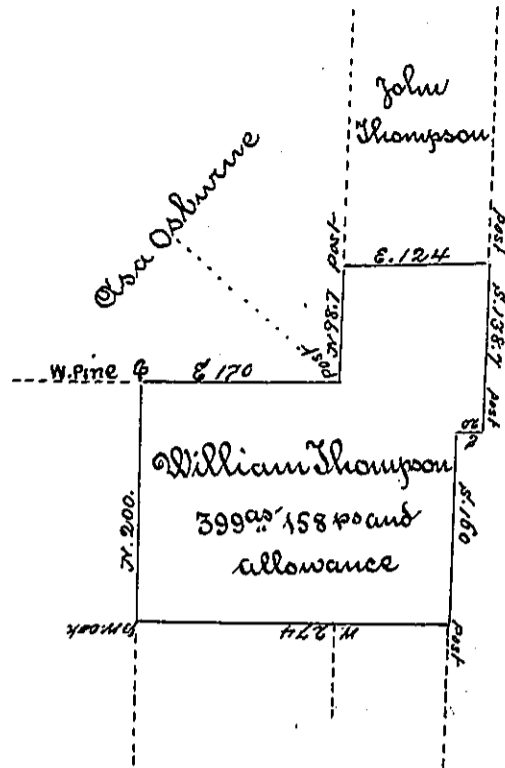


Scale 200 to the Inch



A draft of a tract of land containing three Hundred and Twenty nine acres and one hundred and fifty eight perches with the usual allowance of six per centum for roads situate on the west side of the north Branch of the Susquehanna river near Darall Weiler est in the Township of Wyalusing County of Luzerne bounded west ^{near} by lands of Elsa Osburn North by land survey to John Thompson east & south by lands unknown surveyed the 20th day of August AD. 1795 In pursuance of a Warrant granted to William Thompson dated the 13th day of August AD. 1792 reexamined ~~by~~ the 18th day of Oct. 1810 and Certified by me
 Andrew Porter Esq. S. Genl. Jonathan Stevens A.D.

IN TESTIMONY that the above is a copy of the original remaining on file in the Department of Internal Affairs of Pennsylvania, made conformably to an Act of Assembly approved the 16th day of February, 1833. I have hereunto set my Hand and caused the Seal of said Department to be affixed at Harrisburg, this

second day of June 1896.

James W. Patton
 Secretary of Internal Affairs.